

JJCPA & YOBG 2025-2026 CONSOLIDATED ANNUAL PLAN



SAN JOAQUIN COUNTY PROBATION DEPARTMENT

JUVENILE JUSTICE CRIME PREVENTION ACT (JJCPA)
YOUTHFUL OFFENDER BLOCK GRANT (YOBG)

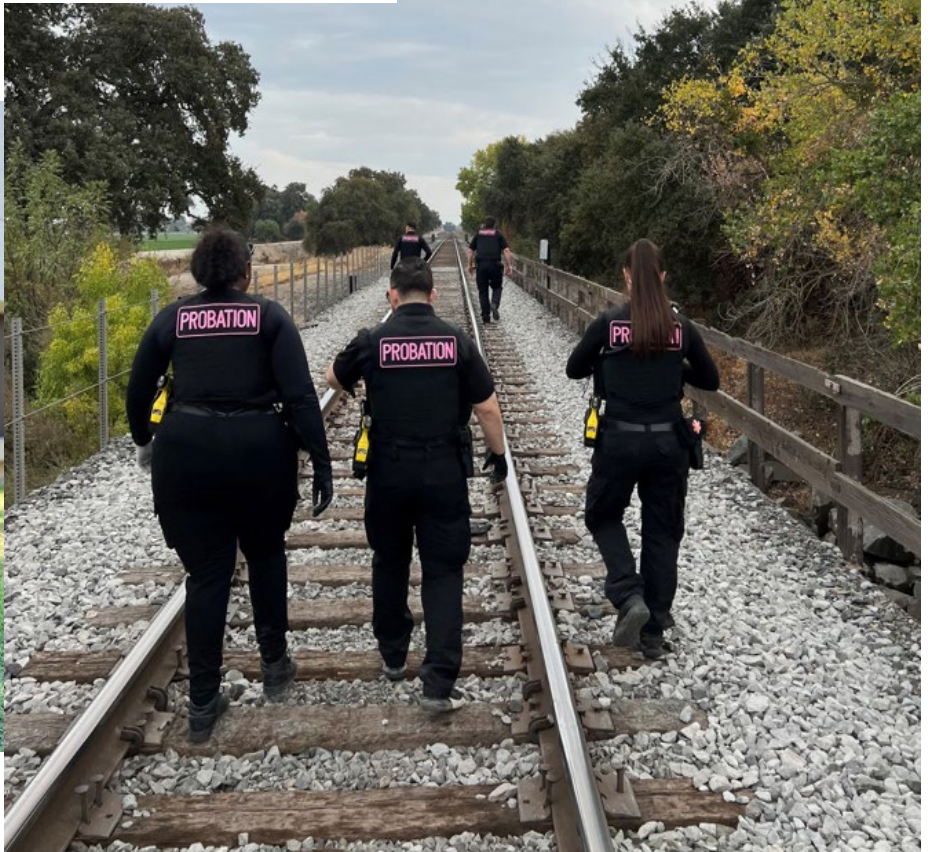


www.sjcprobation.org



Table of Contents

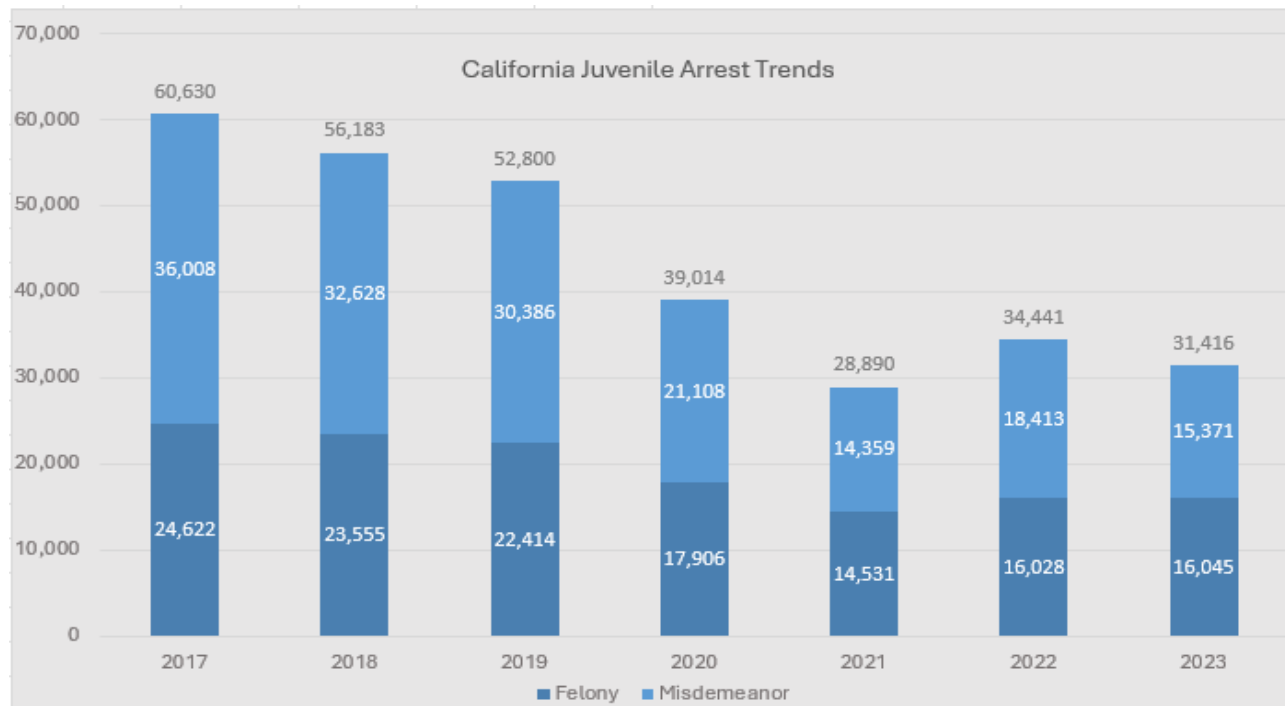
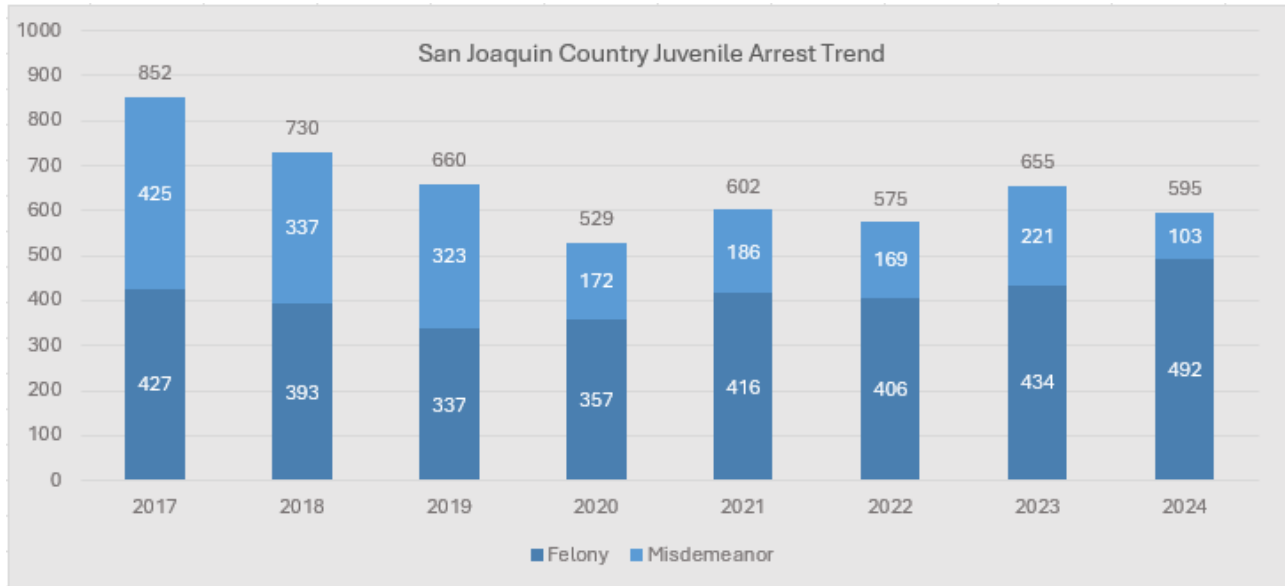
CRIME AND POPULATION STATISTICS	3
Arrest Trends.....	3
San Joaquin County Statistics	4
Active Juvenile Population	5
JUVENILE JUSTICE PLAN	8
Assessment of Existing Services	8
Identifying and Prioritizing Focus Areas	13
Juvenile Justice Action Strategies	13
Strategy for Non-707(b) Offenders.....	16
JJCPA-Funded Programs, Strategies, and/or System Enhancements	18
YOBG-Funded Programs, Placements, Services, Strategies and/or System Enhancements.....	21
CLOSING	26
Information Sharing and Data Collection	26
Additional Comments.....	27
Concluding Remarks	27



CRIME AND POPULATION STATISTICS

Arrest Trends

Juvenile arrests in San Joaquin County saw a decline in 2020, likely due to the pandemic and its impact on the community. However, from 2021 to 2024, arrests have shown a steady fluctuation, both with declines and increases. Statewide, California's juvenile arrests trend shows a decrease in 2021 with a slight surge in 2022. Visuals below show San Joaquin County (8 years) and California (7 years) Juvenile Arrest trends, with offense levels.



*Please note 2024 data currently not available

Source: [State of California Department of Justice - OpenJustice](#)

San Joaquin County Statistics

Demographics in San Joaquin County Cities

The most populous cities in San Joaquin County are namely Stockton, Tracy, Manteca, and Lodi. Among them, Stockton stands out with a population of 319,543 – accounting to approximately 39% of the county's total population. Stockton has the lowest median income at \$76,851 and a relatively comparatively higher poverty rate, with 15.4% of residents living below the poverty line – higher than in the surrounding cities.

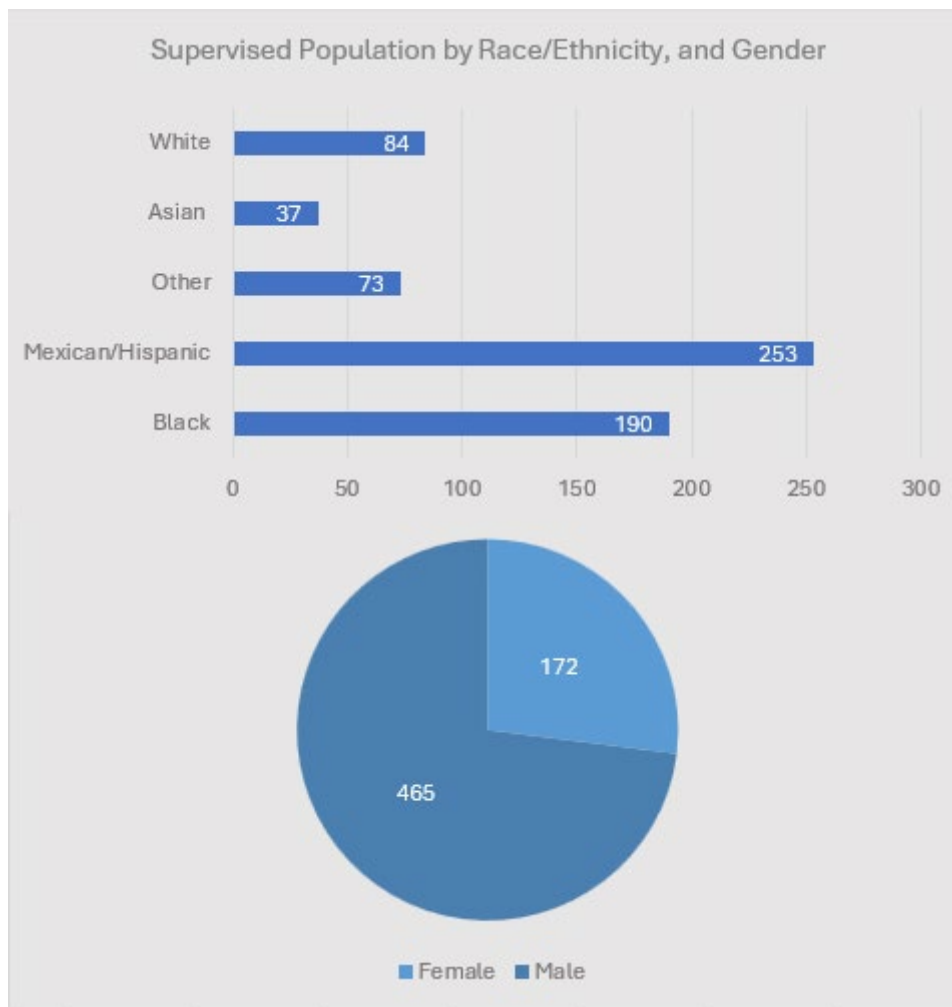
	<i>San Joaquin County</i>	<i>City of Tracy</i>	<i>City of Manteca</i>	<i>City of Lodi</i>	<i>City of Stockton</i>
<i>Population</i>	816,108	98,010	91,059	67,679	319,543
<i>% of Population under 18 years</i>	25.9%	26.5%	26.10%	25.1%	27.2%
<i>Mediuan Household Income</i>	\$88,531	\$118,253	\$94,718	84,402	\$76,851
<i>% of Persons in Provery</i>	12.6%	7.7%	10.40%	13.5%	15.40%

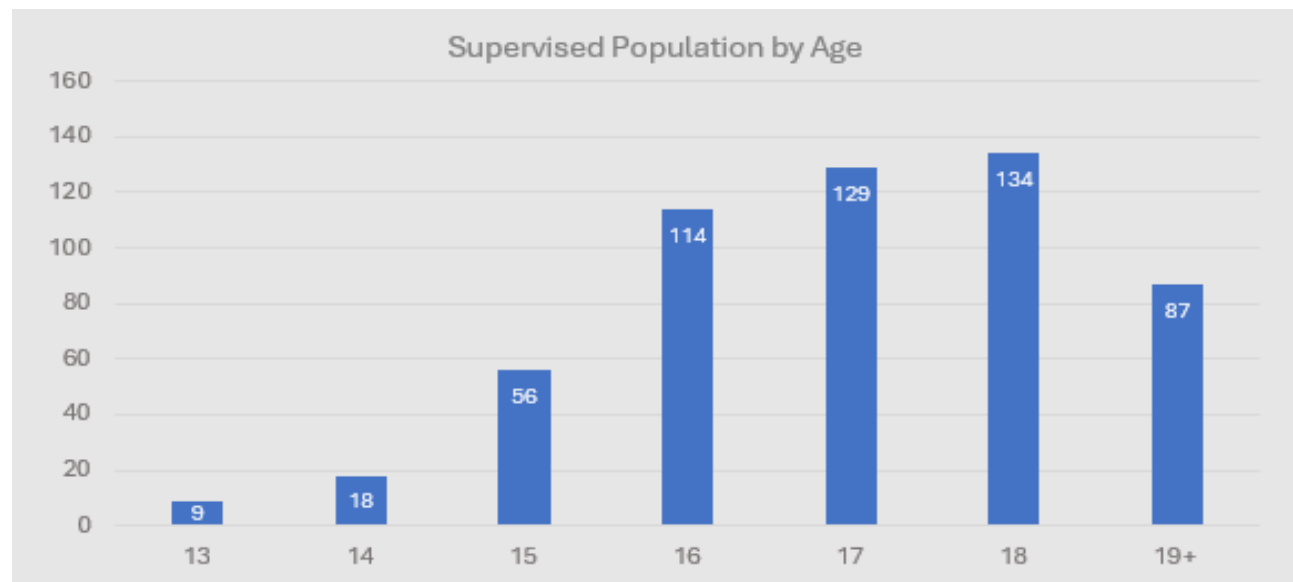
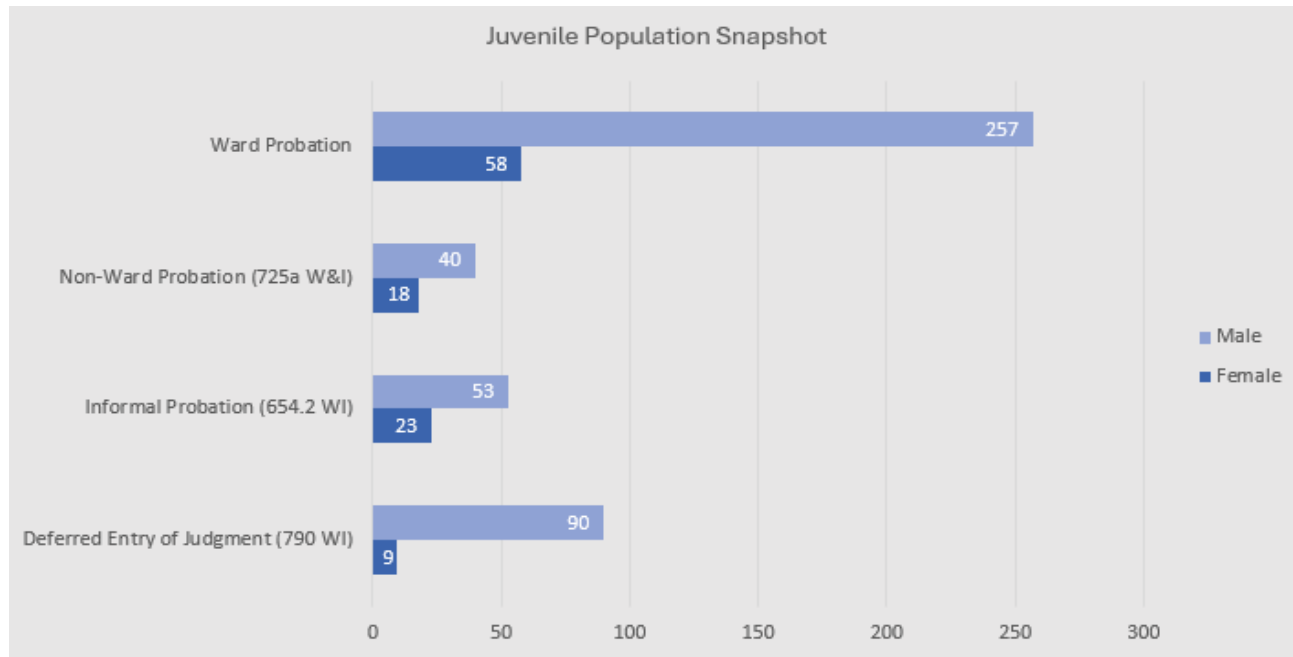
Source: [U.S. Census Bureau QuickFacts: San Joaquin County, California](#)

Active Juvenile Population

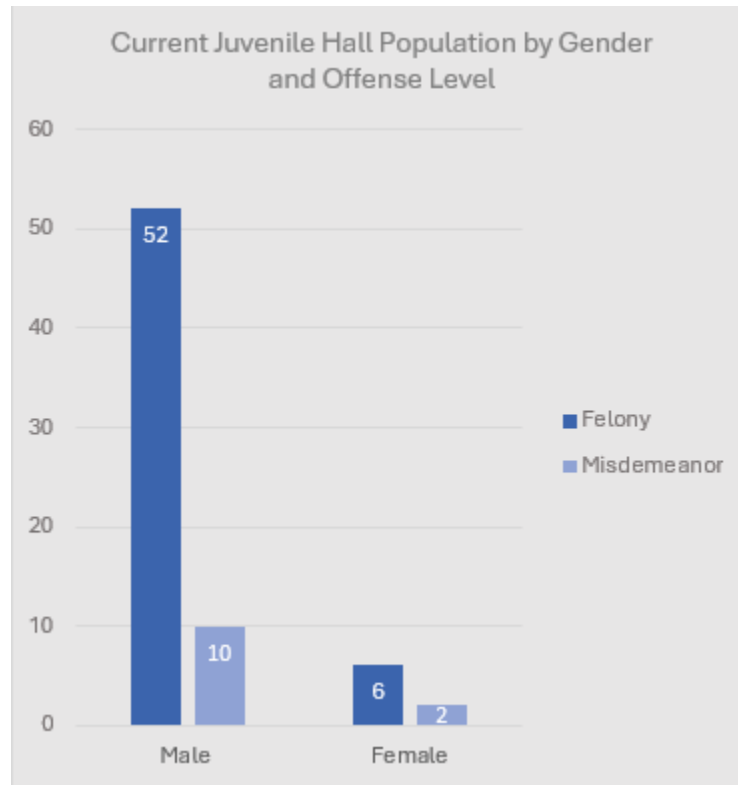
San Joaquin Supervised Population Snapshot as of 12/31/2024

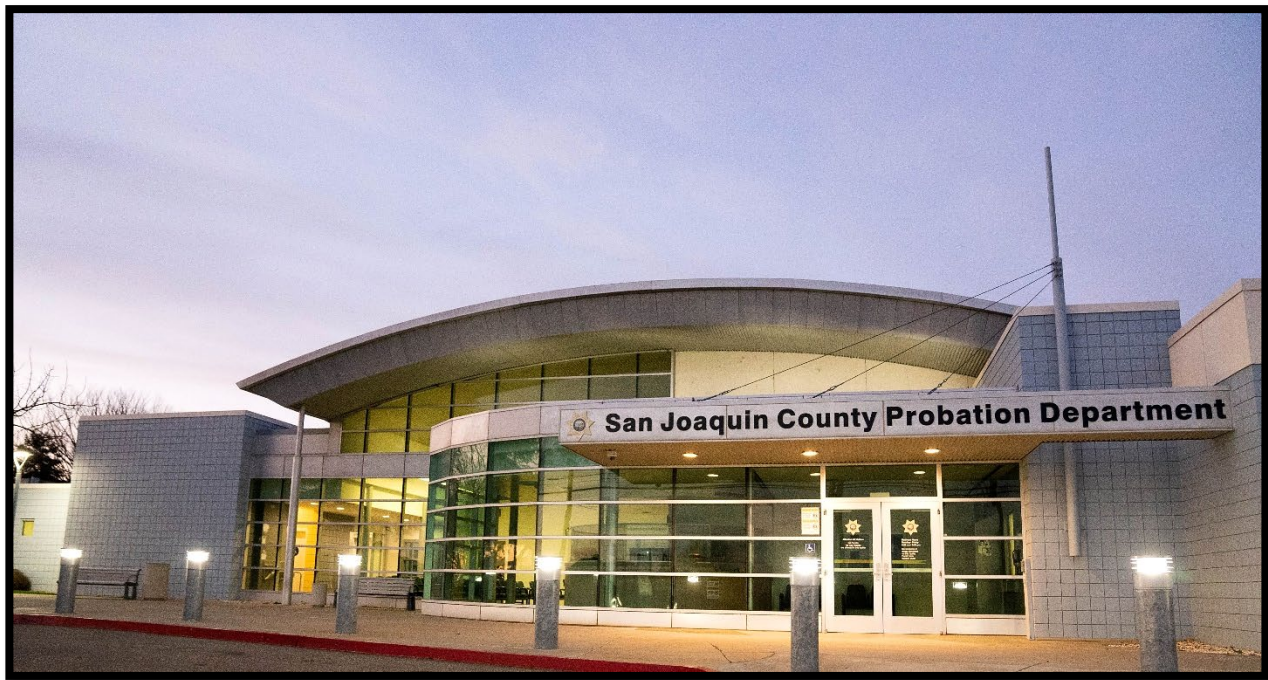
In San Joaquin County, the supervised youth totals 528. The population is predominantly male (73%) and of Mexican/Hispanic ethnicity (40%). Of the total youth, 57% are under Ward Probation, while the remaining 43% fall under Informal Probation (654.2 WI), Non-Ward Probation (725a W&I), and Deferred Entry of Judgement (790 WI). The predominant age group is between 16 and 18 years of age.





The Juvenile Hall population is predominantly male, making up 83% of the total, with most individuals facing felony charges. The Probation Department emphasizes diversion strategies as the primary approach to justice involvement, reserving detention as a last resort. Using comprehensive assessment tools, we identify each youth's most critical criminogenic needs and integrate them into individualized case plans. To provide alternatives to detention, we offer a variety of services, including community-based programs, home supervision, and GPS monitoring.





JUVENILE JUSTICE PLAN

Assessment of Existing Services

Probation partners with the San Joaquin County Office of Education's (SJCOE) Alternative Program whose goal is to keep non-ward students in school and out of the juvenile justice system. Probation Officers, Probation Assistants, families, and school staff all work together in monitoring the youth's school performance while guiding them in a positive direction. A more robust partnership with SJCOE and community-based organizations provides a daily reporting program, hosting the moderate to high-risk youth. Youth receive modified school days and evidence programming focusing on the youth's criminogenic risk factors in reducing recidivism. Probation Officers are strategically housed throughout the county, with officers stationed at local police departments to monitor the different school districts. Officers in the community strengthen the link between the youth and their community, streamlining services in creating a combination of case management, family support services, and evidence-based programming.



SAN JOAQUIN COUNTY
OFFICE OF EDUCATION

Social workers serve in the communities and schools by working with youth who have behaviors that make them at risk of contact with law enforcement or the Juvenile Justice System. Social workers are available throughout the department and its community.

Wraparound case management services address things such as mental illness, substance abuse, homelessness, and domestic violence within the family, focusing on those children who live with significant risk factors. The main purpose is to intervene by providing services that have a positive impact on their future.

Probation Department facilities house youth according to their risk level and criminogenic needs. Facilities offer secure housing, house supervision, and out-of-home placements; and provide collaborative team approach, evidence-based programming, education, cognitive behavioral interventions, and therapeutic support services.

The Explorer Cadet Program, provided by the San Joaquin County Sheriff's Office, is affiliated with the special interest phase of the Boy Scouts of America. Its main objective is to familiarize young individuals with the law enforcement profession through hands-on experiences. These experiences cover various aspects including community relations, criminal law, firearms safety, police procedures, narcotics control, and physical training. By offering this program, the Sheriff's Office brings in extra support to enhance understanding of our society and the influence young people can have.



In partnership with Child Welfare Services (CWS), the Probation Department has created a series of early and preventative WRAP programs to provide intensive youth and family services to prevent placement into a higher level of care or supervision status. All of this is designed to strengthen families and reduce incidences of abuse or neglect. Intensive services and therapeutic treatments are available for children, youth, and families that are recovering from instances of abuse or neglect, including services for parents / guardians to overcome their own traumatic experiences and negative parenting patterns. Preventative WRAP programming is provided within partnerships with Child Welfare Services and local community-based organizations.

“

Success is not final, failure is not fatal:
It is the courage to continue that counts.

”

Winston S. Churchill

Partnership Programs

The juvenile justice system is managed through collaboration and cooperation among partner agencies, including the Juvenile Superior Court, the Probation Department, the District Attorney, the Public Defender, the Sheriff's Department, and local law enforcement agencies. The County Board of Supervisors is responsible, through the annual budget process, for providing most of the resources by which the system operates.

Deferred Entry of Judgement Program (DEJ)

The District Attorney's (DA) Office offers DEJ, which allows youth with felony charges who complete all conditions imposed by courts to have all charges dismissed as well as records sealed. This program is operated in partnership with Superior Courts and the Probation Department.

Project Navigate Constructive Change Program (PNCC)

Through the PNCC program, the DA aids youth and their families in navigating the court system and accessing supportive services, with the goal of diverting them from incarceration.

Youth Development Programs

The San Joaquin County Probation Department works with a wide range of agencies to create growth by guiding high-risk youth, resolving conflicts that are likely to escalate into violence, and supporting young men of color to ensure that they can reach their full potential. These agencies and the programs they operate include Child Abuse Prevention Council, Transitional Age Youth Program (Transitions to Independence Process), City of Stockton, Office of Violence Prevention (Peacekeepers), and My Brother's Keeper (Mary Magdalene Community Services).



Youth development and mentoring programs are managed using the Teen Empowerment Model, Thinking for a Change, and other evidence-based practices.

Family Support Services

Different partnering agencies offer parenting classes and support groups to help those families with high-risk children. These agencies and/or their evidence-based programs include but are not limited to: Mary Magdalene Community Services (Passport to Fatherhood), Family Resource Center, SJCOE (Head Start, Early Head Start, and other Early Care and Education programs), Child Abuse Prevention Council (Strengthening Families), San Joaquin County Behavioral Health Services (Nurturing Parenting), and Parents by Choice (Positive Parenting).

Health Care, Mental Health, and Substance Use Treatment Services

All juveniles, including uninsured children, are eligible for primary and preventative health care services through Medi-Cal. As for mental health services, San Joaquin County Behavioral Health Services (BHS) provide a range of clinical treatment interventions for youth and families including Family Therapy, Multi-Systemic Family Therapy, and Trauma-Informed Cognitive Behavioral Therapy. Lastly, different types of substance use treatment services are accessible to youth and their families. These include outpatient, intensive outpatient, residential, and recovery maintenance programs.

Educational Partners and Programs

Local school districts provide a range of early intervention services including restorative justice and Community Accountability Boards.



Probation Officers are also available throughout San Joaquin County school districts.

The San Joaquin County Office of Education (SJCOE) operates ONE Schools, offering youth an alternative class schedule, focus learning, school-based counseling, family therapy, and other support services through Medi-Cal.



Youth Employment Programs

EEDD or EDD-operated programs funding is allocated towards summer youth employment programs. Summer jobs are offered to youth by WorkNET and CalWORKs, which is operated by San Joaquin County Human Services Agency (HSA). Aside from these, there are also youth employment programs available through cities and local chambers of commerce.

Local citizen and community-based engagement in the juvenile justice system is solicited through several ongoing commissions and committees:

- Juvenile Justice and Delinquency Prevention Commission (JJDPC)
- Juvenile Justice Coordinating Council (JJCC)
- Reducing Racial and Ethnic Disparities Project, Executive Steering Committee (RRED-ESC)

Juvenile Justice and Delinquency Prevention Commission (JJDPC)

The JJDPC is comprised of representatives nominated by both the Superior Court and the County Board of Supervisors. Two youth representatives also sit on the JJDPC. Their members conduct annual inspections of Juvenile Hall, Camp Peterson, and other secure detention facilities for youth.

Juvenile Justice Coordinating Council (JJCC)

The JJCC focuses on oversight of the Probation Department's prevention and early intervention programs that are funded through the Juvenile Justice Crime Prevention Act (JJCPA). The JJCC reviews and approves the programs funded through the JJCPA.

Reducing Racial and Ethnic Disparities Executive Steering Committee (RRED-ESC)

San Joaquin County Probation Department convenes a RRED Executive Steering Committee (ESC) comprised of numerous law enforcement agencies, Child Welfare Services, local school districts, and community-based agencies. The ESC also works closely with other joint-agency efforts to address and reform juvenile justice practices within San Joaquin County, including the Positive Youth Justice Initiative (PYJI), Community Partnerships for Families, and the Court for Individualized Treatment of Adolescents.

Collectively, the three governing bodies above endeavor a comprehensive and collaborative effort across multiple agencies to reform juvenile justice practices. While each commission and committee operate autonomously, they effectively collaborate due to the shared involvement of various partners. All insights and recommendations are communicated among the different entities to facilitate informed decision-making processes.

The San Joaquin County Probation Department continues to explore strategies to facilitate and strengthen collaboration amongst organizations. Strong partnerships between the Courts, District Attorney, Public Defender, Sheriff's Department, and local law enforcement serve as a foundation for ongoing collaboration. Both formal and informal meetings between partners serve as opportunities to discuss current conditions, emerging opportunities, and shared goals to strengthen the juvenile justice system.



Identifying and Prioritizing Focus Areas

The Probation Department is committed to maintaining public safety by focusing on targeted areas with high-risk youth. The department's goals and objectives grow with the needs of our youth and the changes in our youth's population. We strive to continue to build strong foundations within our community and its organizations, both judicial and private. We continue to improve our reports to support data-driven decision-making in our department. We focus on individualized case planning and collaboration with others, providing a wide range of services in meeting the needs of our youth, families, and our communities.

The department will continue to collaborate with justice and community partners sharing information in providing our youth / families with tools for the best future possible. We will focus on utilizing our data showing any disparities within our youth and community in overcoming those disparities and guide us in decision-making.



Juvenile Justice Action Strategies

Countywide Service Needs, Priorities and Strategies

San Joaquin County's Juvenile Justice System is comprised of community-based partners and independent agencies, each responsible for a specific aspect of the juvenile justice process. Existing service providers work with a range of at-risk juveniles, juvenile offenders, and their families. These combinations of resources aid in helping youth understand their actions and take accountability for those actions.

The San Joaquin County Juvenile Justice Action Strategy aligns with best practices by following guidelines issued by the US Department of Justice, National Institute of Corrections (NIC) in Implementing Evidence based Policy and Practices in Community Corrections (2009). This Action Strategy includes the Eight Principles for Effective Interventions described in the NIC guidelines and the Three-Year Board Strategic Priorities adopted by the San Joaquin County Board of Supervisors to improve public safety and enhance the overall criminal justice system. The Action Strategy Framework has been developed into three parts.

PART I

Prevention / Early Intervention Strategy addresses the risk factors that youth face in improving their



critical educational and developmental outcomes. Key strategies include trauma-informed care practices. All juvenile staff attend trainings on those theory and practices. The Coordinated Community Approach is a component of a larger coordinated effort in creating a trauma-informed community, which includes Probation staff, service providers, teachers, school districts, Human Services Agency (HSA), and other organizations throughout the community. This strategy promotes a trauma-informed care and positive youth development lens to the services conducted

within the juvenile justice system; The *Positive Youth Development (PYD)* is a comprehensive way of thinking in facilitating youths' successful transition from adolescence to adulthood. PYD Learning Communities have focused on the needs to support and enhance protective factors in youth, focusing on the domains of relationships, health, creativity, community, work, and education, manuals are updated to reflect positive youth development principles including youth and family engagement in the case planning process and the incorporation of at least one protective factor to reinforce a PYD domain area through case planning and supervision, and to use the rewards matrix to reinforce pro-social behaviors and attitudes.

PART II

Intervention Strategy utilizes evidence-based principles to provide community supervision, placement, and other intervention strategies with the use of assessment instruments to ensure that services are directed to those individuals at the greatest risk of committing future offenses. The Probation Department utilizes different assessment tools to successfully complete this. Detention Risk Assessment Tool (DRAI) is a tool that determines the youth's risk for re-offending and likelihood to keep their court appearance. Positive Achievement Change Tool (PACT) determines the development domain areas with the risk / protective factors identified as opportunities to develop interventions that address the greatest needs. The Risk-needs-Responsivity Model guides decision-making determining supervision level and treatment intervention based on youth's assessments on likelihood to reoffend (risk) in identifying their highest criminogenic factors (need) and matching that youth with the appropriate interventions based on their characters and learning style (responsivity). The Massachusetts Youth Screening Instruments (MAYSI II) is a validation screening tool for determining the presence of mental health concerns. The Juvenile Sex Offense Recidivism Risk Assessment Tool (JSORRAT-II) is used in determining the risk of juvenile offenders detained for sex offenders.



Enhancing Intrinsic Motivation intervention helps individuals in discovering their own rewards for a healthy/positive change in behaviors and attitudes. San Joaquin County Probation uses motivation tools such as Motivational Interviewing (MI), which is a style of communication that probation officers use to help clients overcome the reluctances to engage in discussions and / or overcome their ambivalences regarding behavior changes; Effective Practices in Community Supervision (EPICS) are brief interventions wherein officers teach structured social learning and positive behaviors in a one-on-one interaction. Officers are trained in positive youth development and practice reinforcing at least one positive protective factor through each case plan.

Targeting intervention focuses on the highest risk offenders using the principles of risk, need, and responsivity. The Risk Principle prioritizes primary supervision and treatment resources for the offender at high risk to re-offend. Criminogenic Need Principal addresses offenders' greatest criminogenic needs. The Responsivity Principle considers individual characteristics when matching offenders to services. Dosage Hours Principle provides appropriate quantities, typically programming

hours of services creating a strategic application of resources. The Treatment Principle, particularly cognitive-behavioral interventions, needs to be incorporated seamlessly into the sentencing and sanctioning process for young individuals.

The Probation Department implements Graduated Rewards and Sanctions, utilizing a Rewards Matrix to reinforce positive behaviors and attitudes among clients. Training and unit supervision ensure consistent use of the rewards matrix. Meanwhile, the Sanctions Matrix delivers prompt, unequivocal responses to probation violations. Both matrices consider client risk levels and the gravity of violations or goal achievements.

The Probation Department partners with various community-based organizations to provide pro-social support and interventions for the youth within their communities. These agencies recruit transitional age youth who have lived like experiences to serve as role models providing guidance and support.

The Probation Department evaluates shifts in attitudes and behaviors among juvenile offenders through the Positive Achievement Change Tool (PACT), which is conducted semi-annually or as necessary. Organizational progress is assessed through extensive evaluation tools and data metrics.

A monthly data dashboard is compiled to offer continuous updates on the status of juvenile offenders, gauged by their responses to the Detention Risk Assessment Instrument (DRAI). The DRAI dashboard report provides information on the number of referrals for detention, pre- and post-arraignment circumstances, and the community of origin for each juvenile offender.

PART III

Healthy Communities / Strong Systems Strategy promotes a comprehensive, collaborative, and community-based approach to juvenile justice. This strategy also creates stronger and more resilient communities, reduces racial and ethnic disparities, reduces overreliance on locked facilities for the most serious offenses, and collaborates internally among county departments and externally with other governmental and community organizations, improving all aspects of the county's criminal justice system. The Probation Department is committed to making progress in society by linking programs and services to provide a coordinated range of care.



Strategy for Non-707(b) Offenders

Non-707(b) youthful offenders receive a range of evidence-based interventions and community services to address criminogenic risk, promote positive youth development, and reduce recidivism. The main strategy is to reduce significantly and permanently serious and violent juvenile crime by delivering proactive measures and responses.

The overall strategy for dealing with non-707(b) youthful offenders not eligible for Secure Youth Treatment Facility is implemented by San Joaquin County juvenile justice system partners along with a continuum of intercept points:

- Charges Filed / Determination of Status
- Local Confinement / Detention
- Pre-release Planning (Family Team Meetings)
- Supervision and Evidence-based Programming
- Linkages to the Communities various programs and support services

Determination of Status

As of November 2016, the determination of whether a youth is a 707(b) offender or a non707(b) offender resides with the Presiding Judge of the Juvenile Court.

Detention

Youth may be detained in Juvenile Hall or Camp Peterson based upon length of sentence, risk factors, and programming needs. All youth detained participate in cognitive behavioral intervention (CBI) groups.

Family Team Meeting

Prior to release, there is a Pre-Release Planning where the Department convenes Family Team Meetings to create a re-entry plan in partnership with the youth, their family members, and any natural services within their communities. One of the main goals of the Family Team Meeting is to ensure that youth have an immediate plan in place to re-enter school and to maintain involvement in CBI groups.

Supervision and Evidence-Based Programming

This approach for non-707(b) youthful offenders who are not eligible for Secure Youth Treatment Facility is the same described above where the eight principles for effective supervision are applied. As feasible, San Joaquin County Juvenile Probation creates case plans to maintain youth in homes, schools, and communities to the extent that such plans will support public safety and address the rehabilitation and needs of the youthful offender.



Following their release from the detention facilities, youth will be assigned to a community supervision program that is suitable for their risk and needs (inclusive of out-of-home placement programs). Youth released to home / guardians are assigned a Probation Officer appropriate to their needs. Upon release from detention, youth are integrated back into their local school and provided referrals to community-based organizations for services. Reconnect may also be prescribed for youth that continue to violate the terms of their probation, through youth being assigned to the Reconnect Unit.

The goal is to provide all youth with cognitive behavioral training. In 2017, the Probation Department created an evidence-based programming called “Passport” with the assistance of the University of Cincinnati Criminal Justice Institute and implemented the supporting EBP curricula at Reconnect as part of the required programming for all youth.

Linkages to Community

YOBG funds enhance the capacity of the Department to provide appropriate rehabilitation and supervision services to offenders. JJCPA funds a variety of prevention and early intervention services. While JJCPA funds are principally used to prevent the further escalation of youth within the criminal justice system, some programs are also leveraged as “step-down” programs for non-707(b) youthful offenders exiting detention facilities. Youth released from detention programs will also be linked to community-based programs and services, including those provided through the Neighborhood Service Centers and other community partners as described earlier in this plan.



FUNDED PROGRAMS AND SERVICES

JJCPA-Funded Programs, Strategies, and/or System Enhancements

Reconnect Supervision Unit

This is a comprehensive alternative to detention facilities. The unit supervises youth in San Joaquin County that are wards of the court, as well as those placed on Informal Probation and Deferred Entry of Judgement. Within the unit, a Senior Deputy Probation Officer oversees the Reconnect School Program. This daily reporting program operates in partnership with the San Joaquin County Office of Education (SJCOE) hosting moderate to high-risk youth who report for educational purposes provided by the SJCOE. Officers handle case planning, tracking, and managing youth throughout their days working closely with San Joaquin County Schools and the ONE Schools Officers in the community strengthen the link between the youth and the society. This strategy is supported by the US Department of Justice, Office of Juvenile Justice, and Delinquency Prevention. This is a partnership between the Probation Department, local school districts, law enforcement partners and the county.

Family Focused Intervention Team (FFIT)

FFIT is a wraparound case management service addressing things such as mental illness, substance abuse, homelessness, and domestic violence for those parent probationers and their children who live with significant risk factors. FFIT officers are trained in Motivational Interviewing techniques and Effective Practices in Community Supervision, in addition to facilitating various cognitive behavioral interventions. The main purpose of FFIT is to intervene by providing services that address the family as a whole and have a positive impact on their future. The long-term goal of the program is to positively impact at-risk children and thus prevent their ultimate entry into the juvenile justice system. The program assists clients in providing an appropriate environment in which to raise children and remain crime-free while offering appropriate supervision and support to these high-risk families. Targeted families include those that suffer from mental illness, substance abuse issues, and/or are homeless.

Neighborhood Service Centers (NSC)

Community Partnership for Families operates seven NSC's throughout San Joaquin County. They use a multidisciplinary team approach to working with at-risk and justice-involved youth and their families. The NSC program utilizes a trauma-informed approach in both case management and referral connections. Their core practices include building protective factors and utilizing a trauma-informed lens to assess their needs. Another approach is parental resilience in solving problems, sustaining trusting relationships, and identifying and knowing how to seek help when necessary. The next approach is social and emotional competence of youth, which practices their interaction with others positively, self-regulation of their behavior, and communication of feelings.



And the last approach is called trauma informed care. High rates of trauma have far-reaching and severe consequences. Children exposed to violence are more likely to experience difficulties in school and work settings and engage in delinquent behaviors that may lead to the juvenile and criminal justice systems (Felitti et al., 1998; Ford, Chapman, Connor, & Cruise, 2012).

Neighborhood Services Center/Youth & Family Success Team program model engages youth and their parents / guardians both before and after they interact with law enforcement. The core of the



NSC model is an integrated Youth and/or Family Success Team (YFST). The purpose of the YFST is to enable service providers to efficiently convene and coordinate multidisciplinary services. Clients in need of YFST services are typically probation involved, demonstrate school and/or home issues, exhibit a history of truancy, school violence, expulsion, youth / families that are homeless, at risk of becoming involved in criminal activities, and / or have prior gang interaction. YFST are initiated when the family's situation requires coordinating multi-disciplinary services and any additional service barriers for the family.

Aside from that, NSCs provide Youth Organizing / Positive Youth Development Groups, which are comprehensive services that consist of youth-centered case management, including youth-only, youth-centered family case management, youth organizing, and youth-facilitated community events. It also

includes components such as Positive Youth Development facilitation based on the Teen Empowerment curriculum published by the Center for Teen Empowerment in Boston, MA.

NSCs also offer Parenting Groups, which are peer-learning groups with informal facilitation by a service provider. These groups promote the sharing of parenting concerns, ideas, solutions, and skills. They also provide an additional type of social connection. Parenting classes impart child development knowledge and teach parenting techniques and skills such as child discipline, developing self-esteem, praising good behavior, etc. These skills are associated with the development of protective factors within the family, which in turn reduces the risk of child abuse/neglect, juvenile justice involvement, etc.

Transitional Age Youth Unit (TAY)

This unit provides community supervision to clients aged 18-25 who are under the jurisdiction of the juvenile superior courts. TAY also supervises Post Release Community Supervision (PRCS), Mandatory Supervision (MS), probation clients sentenced from the criminal courts, and youth released from a Secure Youth Treatment Facility on Secure Track. TAY offers evidence-based programming that is modified to help any conflict that may arise due to employment, childcare, etc. Clients are given a 9–12-month period to complete all programming that mirrors their criminogenic needs. After the completion of programming, the client will participate in a three-month aftercare program. The client will have opportunities to obtain a diploma / GED. As with other programs, TAY collaborates with BHS, Victor Community Support Services (VCSS), SJCOE for services.

Under Senate Bill 823, the closure of the state's Division of Juvenile Justice (DJJ) prompted the realignment of its functions to county governments, including in San Joaquin County. As a result, the Probation Department, through TAY's supervision, took on the responsibility of providing comprehensive programming, treatment, and education for those previously committed to DJJ and subsequently placed in the Secure Youth Treatment Facility (SYTF).



YOBG-Funded Programs, Placements, Services, Strategies and/or System Enhancements

Gender Specific Programming for Girls

The Gender Responsive caseload serves female wards aged 12-17 who have been assessed at moderate-high to high-risk level using a validated risk assessment tool. A Probation Officer III is assigned to supervise the caseload of no more than 30 female wards and provides evidenced-based programming, such as Aggression Replacement Training, Courage to Change, and Girls Moving On. The officer also provides services that intentionally allow gender identity and development to affect and guide all aspects of program design and service delivery. Female youth who are detained in Juvenile Hall receive the same gender-specific programming as well as Creative Therapy. Creative Therapy promotes healing and transformation through color and creative expression. Youth participate in art that is soothing, restorative, and inspirational. The detained female youth design a unique and calming environment, bringing the natural world outside within the walls. They also get to do yoga therapy to move the body and calm the nervous system.



Camp Peterson

Camp Peterson serves as a crucial component within the Juvenile Court's service offerings, aimed at safeguarding and benefiting the community in a cost-efficient and effective manner. The program's objective is to enhance community well-being by mitigating the impact of juvenile delinquency. Youth enrolled in the camp participate in the passport program, acquiring essential life skills before reintegrating into the community. Through structured programming, the camp fosters values such as self-discipline, accountability, responsibility, tolerance, self-respect, respect for others, sobriety, physical and academic education, as well as basic life skills, all achieved through dedicated effort. Operating within a therapeutic environment, Camp Peterson imparts the attitudes and skills necessary for a pro-social lifestyle to its youth participants.

Community Accountability Prevention Services (CAPS)

The Community Accountability Prevention Services operates within San Joaquin County, serving both communities and schools. CAPS focuses on assisting youth who display behaviors that put them at risk of involvement with law enforcement or the Juvenile Justice System. This unit consists of social workers employed by the Probation Department. These social workers are designated to work with either the Crossroads program, Discovery Challenge Academy (DCA), or stationed at Camp Peterson. They offer counseling and referral services to unsupervised youth aged 10 to 18, as well as their families, aiming to identify and redirect inappropriate behaviors.



CAPS social workers are assigned to the Discovery Challenge Academy (DCA), a tuition-free 22-week residential program catering to youths aged 16 to 18. At DCA, participants have the opportunity to earn 65 high school credits toward their diploma while acquiring essential life skills to facilitate their return to a healthy and productive lifestyle.

Furthermore, CAPS social workers are also stationed at Camp Peterson, part of the San Joaquin County Juvenile Hall. Camp Peterson offers a structured program aimed at instilling pro-social attitudes and skills in its youth residents. Working alongside probation officers, the social workers support the youths in achieving program objectives and aid in their reintegration into the community and family settings.

Cognitive Behavioral Interventions

Cognitive Behavioral Intervention procedures are universally available, whether the youth is in detention, at Camp Peterson, or under probation. Probation services provide evidence-based programming tailored to address the youths' criminogenic needs, with the aim of decreasing recidivism rates. Probation staff undergo training in various areas covered by the Passport program, including ART, Social Skills, etc... The department also collaborates with external community-based organizations in providing CBI-SA groups.

Placement Supervision, Private Residential Care

Placement officers create case plans with attainable treatment goals that include a discharge plan timely reunification and permanency in mind for new placement youth they supervise. Placement officers develop case plans with achievable treatment objectives, prioritizing timely reunification and permanency for newly placed youth under their supervision. They actively participate in court

permanency hearings and weekly disciplinary team meetings, in addition to coordinating placements and arranging visits for the youth as necessary.

Re-Entry and Aftercare Services

Before the youth reintegration into the community, probation officers collaborate with families to ensure their preparedness for the youth's homecoming. Interventions may involve group or individual therapy for both parents and the youth, parenting classes, and home assessments. Utilizing home passes serves as an effective trial strategy before the youth's actual return. An essential aspect of reentry planning is setting educational goals for the youth's return to school. The Probation Department acknowledges the importance of providing these youth and their families with supportive transitional services and thorough supervision. Referrals to community-based organizations are made to Wraparound Services. Assessment tools are employed to assess risks and needs, leading to referrals to evidence-based programs, treatment provider meetings, family success team meetings, School Attendance Review Boards, and Individualized Education Program (IEP) meetings.

Actuarial Risk and Needs Assessment Services

San Joaquin County has established a validated risk/needs assessment tool called PACT for all juveniles entering the Juvenile Justice System. The outcomes of the PACT assist in determining appropriate dispositions, referrals to evidence-based programs, and the formulation of reentry plans for those juveniles returning home following detention in Juvenile Hall, the Camp, or placements outside the home. Criminogenic needs are identified, evaluated, and prioritized to enable probation officers to make well-informed decisions. Juveniles are assessed based on their risk of reoffending, and resources are directed toward those with moderate to high-risk scores, aiming to reduce future criminal behavior and recidivism rates. Furthermore, all juveniles admitted to Juvenile Hall undergo assessment using the Detention Risk Assessment Instrument (DRAI), a validated tool used to decide whether they should remain detained or be released pending their court proceedings.

San Joaquin County Behavioral Health Services

San Joaquin County Behavioral Health Services (BHS) provide voluntary mental health services for the youth in the Juvenile Justice Center. All youth who are booked into the facility are evaluated for emotional and behavior risk-factors and administered treatment. The different types of services offered range from Comprehensive psychosocial mental health assessment and individualized treatment based on a youth's specific and unique needs. BHS interventions include individual therapy, rehabilitation services, trauma informed treatment using Trauma Affect Regulation Group Education and Therapy (TARGET), relaxation training, and affect regulation skill managing stress responses. Additionally, youth are provided with psychoeducation, assisting in the development in coping and problem-solving skills. Youth have access to psychiatric medication consultation and services, crisis intervention services as needed, substance abuse psychoeducation and case management linkage to aftercare services up release.

The Whole Youth Project

The San Joaquin County Probation Department has partnered with the Ceres Policy Research Whole Youth Initiative. This collaboration aims to offer technical support concerning LGBTQ+ youth within the justice system. The primary objective of this initiative is to equip departments with the necessary tools to effectively assist lesbian, gay, bisexual, questioning, gender nonconforming, and transgender (LGBQ-GNCT) youth. The Ceres team stands ready to provide various forms of assistance, including policy development, training, establishment of peer-to-peer learning networks, and data collection and analysis.

Tattoo Removal

San Joaquin County Probation is dedicated in providing our youth with opportunities to transform their lives. The Tattoo Removal program provides an opportunity for the youth to remove any tattoos that have a negative impact on their lives. These services offer sessions of hours for tattoo removal, with a Registered Nurse and an assistant present. These services are provided while the youth are in custody. But if they are released before the tattoo removal is completed, continued services will still be offered outside custody to complete the process.



We Heart Art Academy

San Joaquin Probation provides a program in collaboration with We Heart Art Academy (WHAA). WHAA offers an 8–10-week program cycle encompassing visual, performing, and literary arts, integrating restorative justice principles. Professional teaching artists facilitate the creation of a "Brave Space" environment, fostering the rehabilitation journey toward healing. Through artistic expression, youth gain opportunities for self-expression, healing, sharing, and communication, fostering stronger connections within families and communities. This collaboration believes in the power of art for youth in expressing themselves, healing, and sharing their experiences.

Drug Analyzer / Mail Screener

At San Joaquin County Probation Detention, the well-being of our youth and the safety of our facilities are top priorities. To uphold these standards, the department has introduced the TruNarc Solution Kits from Thermo Fisher Scientific. This advanced technology helps in detecting any significant narcotics present among youth, promoting a healthier and safer environment within the facilities.

Another crucial innovation that will be introduced for maintaining security within the facilities is the Vero Vision Mail Screener from Eclipse Technologies. It uses near-infrared light technology that goes beyond the limitations of visual or manual inspection, allowing swift and accurate detection of

illegal substances within incoming mail. This new approach not only enhances safety but also streamlines the screening process, providing a more efficient solution for identifying potential threats.

Books for Higher Education

The Probation Department partners with San Joaquin County Delta College to procure books for higher education. Probation is eager to participate in any opportunity that equips youth with the tools and services they need to improve themselves, thus positively impacting the community.

Detention Technology

The San Joaquin County Probation Department employs a secure tablet initiative. Utilizing the Securus Secure View device, detained youths have access to educational resources, recreational activities, and communication with their families/relatives during their time in custody. This program operates on an incentive model, granting youth the opportunity to engage in activities such as educational research, video entertainment, and maintaining connections with their loved ones.

There are no regional agreements to be supported with YOBG funds.

CLOSING

Information Sharing and Data Collection

San Joaquin County Probation utilizes data systems to measure and track the juvenile probationers. The Research and Evaluation Unit manages data collection from various case management systems, monitors data quality, and creates analytical reports that assist in decision-making and informed strategic planning for the department.

Vantage Assessment Management System is a database which includes the Social History Report, the Detention Risk Assessment Instrument (DRAI), the Juvenile Sexual Offense Recidivism Risk Assessment Tool – II (JSORRAT-II), Case Plan, the Positive Achievement Change Tool (PACT), and the Massachusetts Youth Screening Instrument 2 (MAYSI-2).

Offender 360 is a case management software solution in which master files are created for the respective populations incorporating criminal history, assessment information on risk of reoffending, needs, strengths, medical, mental health, education, and human services records to inform custodial placement and treatment determinations and automate classification, placement, and movement decisions.

The department has developed Business Services Agreements with BHS, Correctional Health, and SJCOE. All partners are approved and cleared of a background investigation who can provide on-site services for the offenders. Partners have some access to the system, following HIPPA and other federal information sharing guidelines, all interactions are logged into the system for the officer's review.

Data Dashboards are produced monthly to facilitate transparency, continue improvements, and evaluate the effectiveness of our services.



Additional Comments

In July 2024, San Joaquin County launched the Anti-Sex and Labor Trafficking (ASALT) Task Force, comprising members of the DA Investigator's Office and SJSO. The task force is committed to combating all forms of human trafficking through long-term victim support, offender prosecution, law enforcement training, community outreach, and the development of strong public-private partnerships. On October 7, 2024, the San Joaquin County Probation Department joined the initiative, further strengthening the countywide collaboration.

San Joaquin fully constitutes the Juvenile Justice Council (JJCC) as prescribed by Welfare & Institutions Code 749.22.

Concluding Remarks

On this year's reviews of our existing programs, it is evident that our targeted initiative has been instrumental in fostering positive outcomes for our youth, families, and our community. We strive to continue to equip our youth with the necessary skills, support, and opportunities for growth and rehabilitation. These programs not only contribute to reducing recidivism in supporting a safer, stronger community, but they are also imperative in paving the way for our youth's personal transformation and our community's restoration for a brighter future.

“

In any given moment
we have two options: to
step forward into
growth or step back
into safety.

”

Abraham Maslow