

FROM RESILIENCE TO RESISTANCE



Moving Beyond Trauma-Informed to Healing-Informed



Founded in 2011

Formerly-incarcerated community activists

Ending Oakland's gang injunction

Youth Leadership Development

Policy & Advocacy

Community Healing

Training & Capacity Building

Demonstration Real Estate Models



MISSION

Unlock the leadership of young people to dream beyond bars.





George Galvis

Executive Director
George Galvis

ggalvis@curyj.org



Vamsey Palagummi

Managing Director

vamsey@curyj.org



*Dr. Frankie Free
Ramos*

Director of
Campaigns and
Organizing

framos@curyj.org



J Vasquez

Director of Policy

jvasquez@curyj.org



Xochtil Larios

Youth Leadership
Associate
Manager

xlarios@curyj.org



Criminalizing The Poor

Homelessness

Unemployment

Foster Care

Access To Good Schools



Poverty is the strongest predictor for being incarcerated



POLICING AND INCARCERATION

In Alameda County, **Latinx youth are 2.3x more likely** than white youth to be arrested for a felony, while **Black youth are 10.6x more likely**.

((Irvine et. al., 2017) "Dream Beyond Bars Report" - CURYJ 2019)

LBGTQ-identifying youth are also twice as likely to be arrested and detained for status offenses and other nonviolent offenses as their peers and are at higher risk for illicit drug use leading to arrest. *(Ibid)*

In a Bay Area News Group review of 72 deaths at the hands of police, **two-thirds of those killed** were experiencing a mental health episode.



The Davis Vanguard
Credit: Thomas Hawk

POLICING AND INCARCERATION

Aggressive policing has been definitively linked with **increased symptoms of trauma and anxiety**, particularly in young urban men. (*American Journal of Public Health*, 2016).

Half of all youth in the juvenile system are dealing with **mental illness** while **93%** of them have been **victims of trauma**. (*American Psychiatric Association. Mental Health Disparities: Diverse Populations*. (2017); Abram et al., 2013).



Condé Nast

The safest communities are not the most policed, they are the most resourced.



FOUR LAWS OF CHANGE

1. Change comes from within
2. In order for development to occur, it must be preceded by a vision
3. A great learning must take place
4. You must create a healing forest

From: The Red Road to Wellbriety in the Native American Way. White Bison, Inc. Hazelden Publishing & Educational Services, 2002



HOW WE ENGAGE

La Cultura Cura

Our culture is our foundation,
our strength, our healing and our
recovery.



HOW WE ENGAGE

For Us, By Us

Those who have overcome these challenges are best equipped to reach young people.



HOW WE ENGAGE

Every Young Person Is A Blessing

Allowing young people the permission to be their full selves.

Unresolved pain and trauma becomes anger.

Anger becomes rage.

Rage becomes violence.



WHAT THIS LOOKS LIKE AT CURYJ

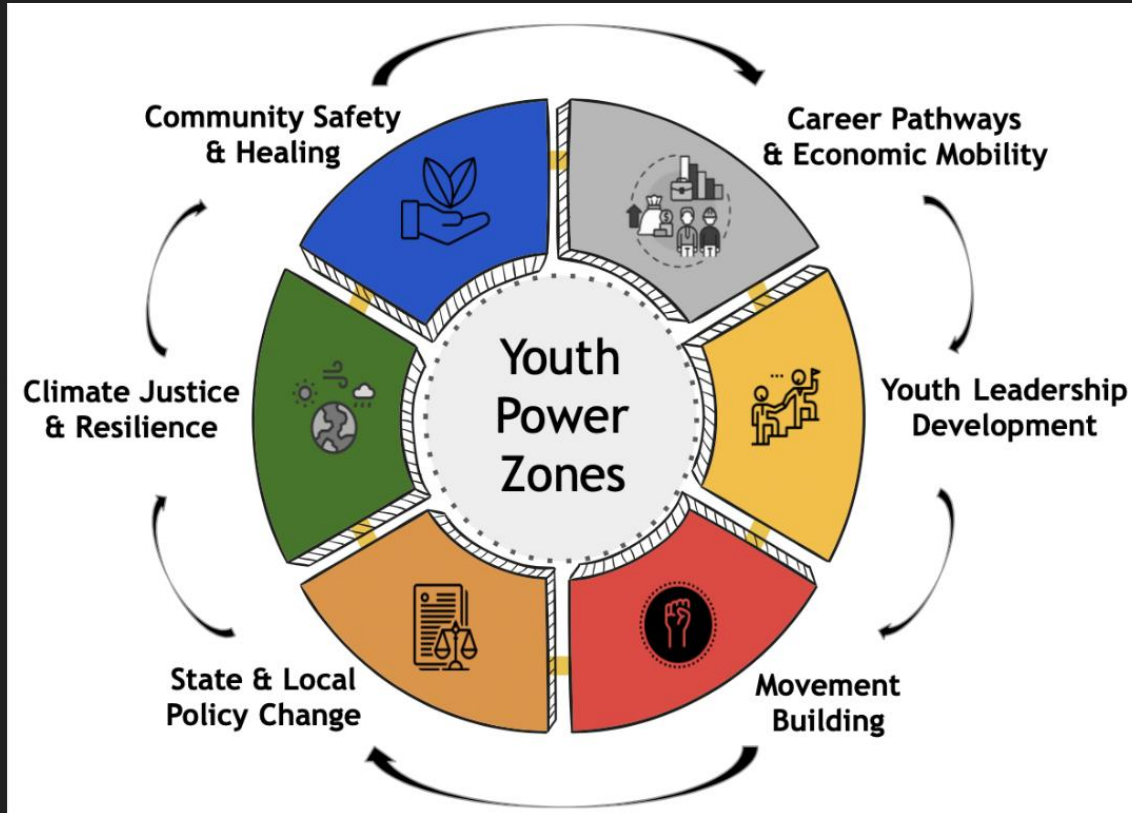
We **elevate the voice and power** of young people to dream beyond bars.

Move **beyond resilience and into resistance**: we have power over our lives, bodies, families, communities, and destinies.

Improve conditions for generations to come.



An Ecosystems Approach



A CENTRAL LOCATION



Creating access and opportunity to promote development without gentrification



Community Safety & Healing

We are building a continuum of care for systems-impacted and formerly-incarcerated youth, their families and the broader community.



Youth Leadership Development



Through culturally-rooted education, youth organizing, and mentorship, we elevate youth voice and power to find their sacred purpose.



Career Pathways & Economic Mobility

Lack of financial stability is one of the biggest drivers of re-incarceration. We tap into young people's' innate hustle and entrepreneurial skill.



State & Local Policy Change



Direct services by themselves are not enough. Systems need to shift if we are going to end youth incarceration.



A Movement Building Hub

The YPZ serves as a grassroots organizing hub for partner CBOs and community members with space for intergenerational education, culture-sharing, and coordinated movement building.



The Youth Power Zone

Building One

- Homies 4 Justice Internship
- Dream Beyond Bars Fellowship
- Campaigns & Organizing
- Policy & Legal Services
- Cultural Arts and Activism
- CURYJ Offices



The Youth Power Zone

Building Two

- Community healing
- Life Coaching
- Violence Interruption
- Youth Recreation
- Food Justice
- Climate Resilience Center



Youth Housing - LRP

Vision: A Space for Healing & Transformation

- Residential healing
- Life Coaching
- Cultural Healing
- Credible Messenger Support
- Peer to Peer Circles
- Transitional ATI process
- Workforce Development
- Leadership Development
- Active Community Engagement

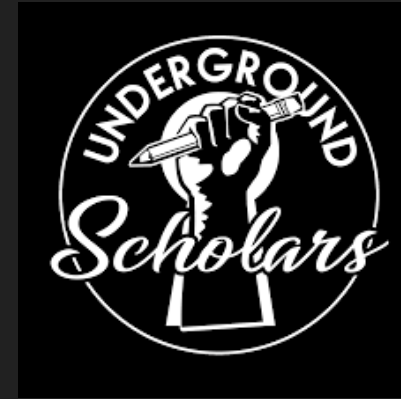


Additional Partnerships



Restoring Our Communities
Reentry Programming

Higher Education Referrals
College Credits Inside



UC Berkeley Underground
Scholars & Incarceration to
College Program

Higher Education
Leadership Development



Merritt College

Higher Education
Leadership Development

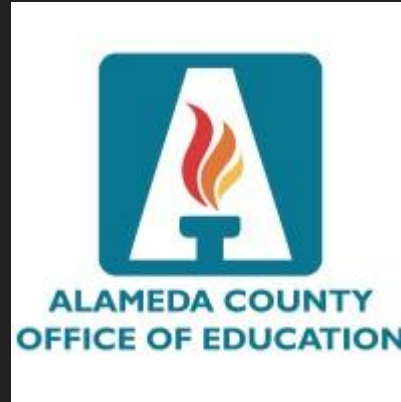


Additional Partnerships



Core CURYJ Program

Leadership Pipeline



Alameda County Education

Partners for Young People
who have received their high
school diploma while
incarcerated



Alameda County
Probation

Referral Partner
Workforce Development
Program





The Big Picture Impact

We envision a California where all young people are honored and treated as inherently sacred.

Instead of police, probation, and jails, we believe in community-led solutions that uplift all young people.



CREATE A BELOVED COMMUNITY

A positive community connection improves life outcomes for young people. *The more contact with systems (ANY and all systems), the worse their outcomes become.*

Metric for success: Does a young person feel loved?

Readiness to treat trauma: it has to be in your heart.



CREATE A BELOVED COMMUNITY

